

- 1 Use  $<$ ,  $>$  or  $=$  to make these number sentences correct.

$$9 \times 7 > 8 \times 7$$

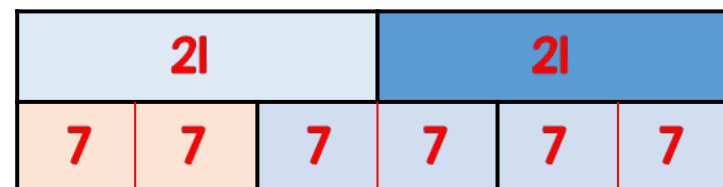
$$48 \div 2 > 48 \div 4$$

$$300 \times 2 = 20 \times 30$$

- 2 There are 1,500 children in a school.  
565 of the children are girls.  
How many more boys than girls are in the school?  
 $1,500 - 565 = 935$   
 $935 - 565 = 370$   
There are 370 more boys than girls.

- 3 Mr Patel writes a number on the board.  
Leon finds  $\frac{1}{2}$  of the number.  
Sophie finds  $\frac{1}{3}$  of the number.  
Leon's number is 7 more than Sophie's.

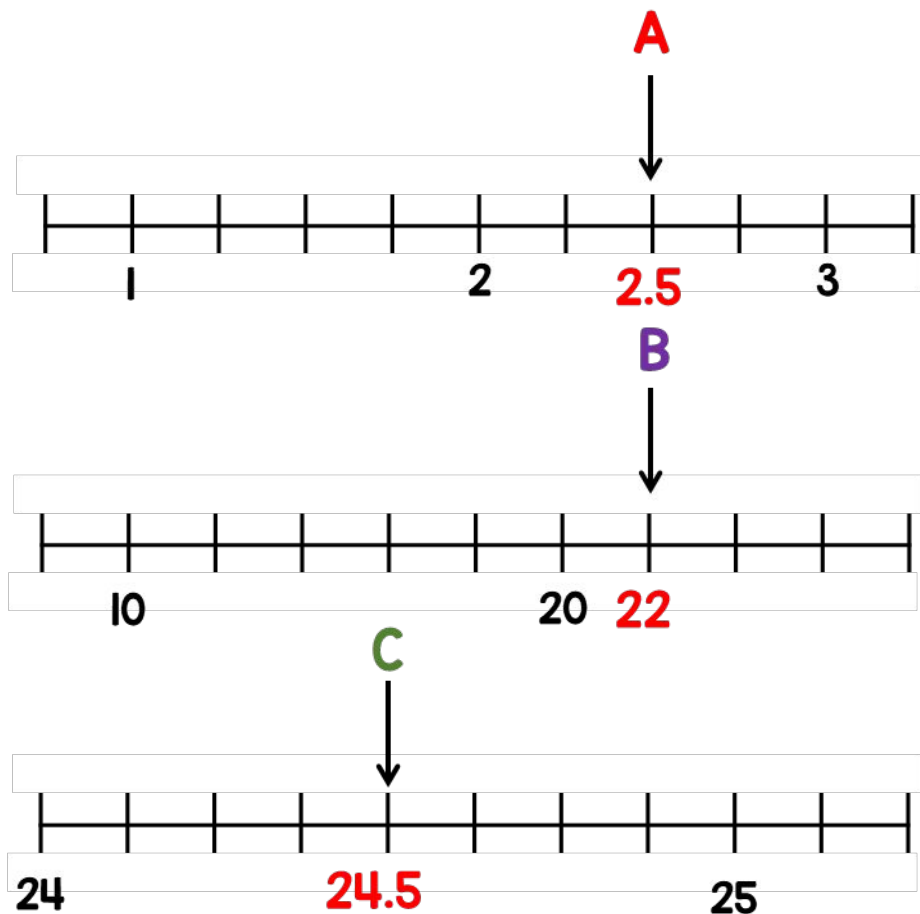
What is the number Mr Patel started with? This bar model may help you.



Mr Patel started with 42

1 Given that  $A + B = C$

Draw an arrow pointing to C



2 George has a box of counters.

- For every 2 red counters there are 5 blue ones.
- George removes 36 blue counters from the box.
- There are now the same amount of red and blue counters.

How many red counters were in the box at the start? **24 red counters.**

3 Elijah says he divided 32 by a number and got 64

Is this possible?

**Yes, he could divide by 0.5**

- 1 Sam has £29  
He gets £28 more for his birthday.  
He buys this cap and jumper with his money.

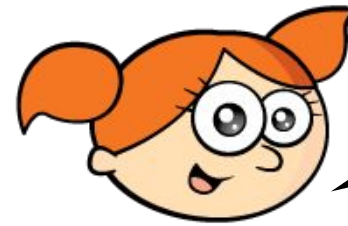


How much money does he have left?

**Sam has £16.51 left.**

- 2 One fifth of a number is 12  
What is a half of the number?  
 $12 \times 5 = 60$   
 $60 \div 2 = 30$   
**Half of the number is 30**

3



I have 207 stickers

I have 150 stickers



Mo gives Alex some stickers.  
Alex now has twice as many as Mo.  
How many stickers did Mo give Alex?

$$207 + 150 = 357$$

$$357 \div 3 = 119$$

**Mo gives Alex 31 stickers.**

- 1 Circle all the numbers equivalent to 0.25

0.4

$\frac{50}{100}$

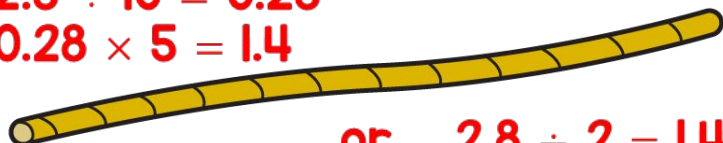
$\frac{25}{100}$

$\frac{1}{4}$

- 2 A rope measures 2.8 metres.

$$2.8 \div 10 = 0.28$$

$$0.28 \times 5 = 1.4$$



or  $2.8 \div 2 = 1.4$

The rope is cut into 10 equal sized pieces.

What is the total length of 5 of these pieces?

The total length is 1.4 metres.

- 3 Sweets come in boxes of 600  
Danny has two boxes of sweets.



$$600 \times 2 = 1,200$$

He packs the sweets into smaller bags.

There are 21 in each bag.



How many bags can Danny fill using all the sweets?

$$1,200 \div 21 = 57 \text{ r } 3$$

Danny can fill 57 bags.

## 1 On a bookcase

- $\frac{5}{8}$  of the books are fiction books.
- The rest are non-fiction.
- There are 72 non-fiction books.

How many books are fiction?

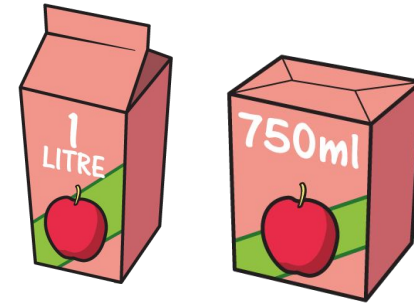
$$\text{Non-fiction} = \frac{3}{8}$$

$$72 \div 3 = 24$$

$$24 \times 5 = 120$$

120 books are fiction.

## 2 Amir has two cartons of apple juice.



He shares all the juice equally between these glasses.

$$1,750 \div 5 = 350$$



How much apple juice does he pour into each glass?

He pours 350 ml into each glass.