

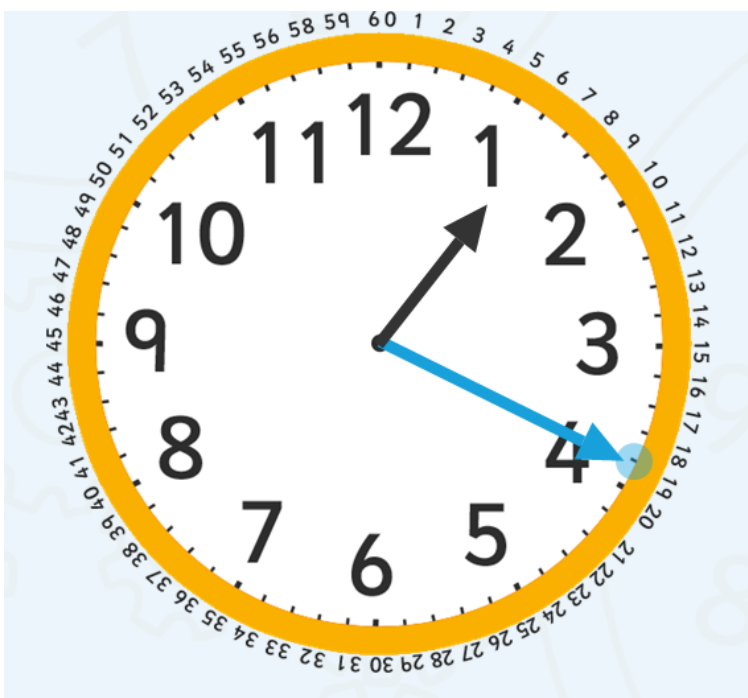
Maths

24 Hour Hours

This clock and table show the corresponding hours on a 24 hour clock.



00:00 = 12:00 AM	12:00 = 12:00 PM
01:00 = 1:00 AM	13:00 = 1:00 PM
02:00 = 2:00 AM	14:00 = 2:00 PM
03:00 = 3:00 AM	15:00 = 3:00 PM
04:00 = 4:00 AM	16:00 = 4:00 PM
05:00 = 5:00 AM	17:00 = 5:00 PM
06:00 = 6:00 AM	18:00 = 6:00 PM
07:00 = 7:00 AM	19:00 = 7:00 PM
08:00 = 8:00 AM	20:00 = 8:00 PM
09:00 = 9:00 AM	21:00 = 9:00 PM
10:00 = 10:00 AM	22:00 = 10:00 PM
11:00 = 11:00 AM	23:00 = 11:00 PM
12:00 = 12:00 AM	24:00 = 12:00 PM



Telling the time to the nearest minute

A clock shows 60 minutes around it. These are shown with dashes.

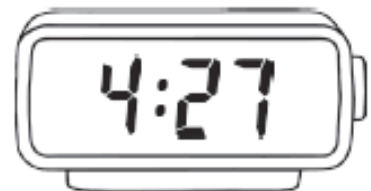
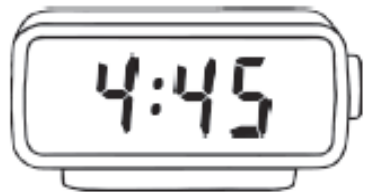
Take a look at the time here.

The hour hand has just gone past the 1 and the big hand is 19 minutes past.

So its 19 minutes past 1 or 01:19.

Maths

Match the analogue to the digital by drawing a line between clocks with the same time.



Maths

12-Hour and 24-Hour

Read the time on these analogue clocks. Write each time in 12-hour and 24-hour formats.



In the morning



In the evening



In the afternoon



In the early morning



In the afternoon



In the morning



In the morning



In the evening



In the morning



In the afternoon



In the evening



In the afternoon
