

# Year 1 Curriculum Letter - Spring Half Term 1 2024

Our theme for Spring Term One is:

## Best of Leicester

Our main focuses are:

- Exploring Leicester and looking at key attractions and monuments.
- Looking at the ARH building in the past and comparing it to how it is now.
- Learning about Richard III.
- Using a range of tools on Seesaw.
- Understanding and exploring different emotions.



English:

In English we will be consolidating our knowledge of how to write phonetically plausible sentences. We will be looking a range of non-fiction texts this term including writing about Richard III.

We will also be using adjectives to create a setting description of known settings around Leicester. We will use our senses to help us really capture the setting we are describing. Next, we will be using our persuasive language in letters to invite people to visit our great city. We will then be sharing all the great facts and landmarks that we have learnt about and telling people why they should visit us. Finally, the children will learn about rules within the sport of football. They will have the opportunity to write their own set of rules for the great game.



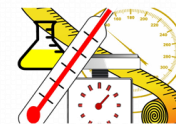
Super Sentences!



Mathematics:

Our Maths, will be linked to our topic, 'Best of Leicester' where possible.

We will be building on our skills of addition and subtraction by applying this to a range of word problems. We will have to be number detectives to spot what we are being asked to do. We will then look at measurements with a focus on length and height. We will be looking at and comparing items, saying whether they are longer or shorter. We will then move onto mass and weight and again compare objects saying which is the heaviest. We will then apply this to solving problems based on measurement. Finally, we will look at multiplication and division calculations. The children will be shown a variety of methods to solve these calculations, that are both practical and written.



Personal, Social and Health Education P.S.H.E.

Within P.S.H.E. we will exploring our emotions and understanding different types of feelings, including loss.

No Outsiders

We will continue to follow the 'No Outsiders' scheme of work this term, looking at ways we can get along together.

Music

This term we will look at 'In The Groove' by Joanna Mangona - an easy-to-learn song that demonstrates different styles of music. The children will learn about tuned and untuned instruments.

R.E.

Within R.E. we will be focusing on Christianity and looking at prayer and worship as well as inspirational people.

Physical Education (P.E.)

To keep us fit and healthy during the Spring term, we will be focusing on dance. The children will get to learn about movements and follow simple instructions. They will then create and perform dances using these simple movement patterns.



Please ensure the children have plimsolls, plain white t-shirts and black bottoms. All children must have earrings removed for P.E. Thank you.

History

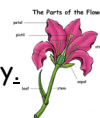
Leicester is such an interesting place to live and we will be learning about the history of our fascinating city. This will include:

- Looking at different buildings in Leicester and comparing old and new buildings with a focus on our school and how it has changed.
- Looking at historical events which took place in Leicester with a focus on Richard III.

Science

In Science we will be:

- Looking at wild flowers and flowers in our locality.
- Understanding the different parts of a flower.



Geography

This term we will learn about the United Kingdom and the four countries within it as well as their capital cities. We will also be learning about physical and human features and understanding the difference between them. We will look at local maps and try to spot features using keys.

Art and Design

The children will have the opportunity to look at famous sculptures as well as looking at some that can be found in Leicester. They will learn what a sculpture is and they will have the opportunity to plan, create and evaluate their own sculptures linked to Leicester.



Behaviour and Safety

This half term we will learn about 'Clever Never Goes' when learning about stranger danger.

Computing

In Computing we will be:

Using the 'Paint' app to create an iconic landmark from Leicester. We will use the text and microphone tools to add details to our work.

Shared home learning:

Please spend 10 minutes, as a minimum, reading with your child everyday. This will really help support your child's success in reading. This should be logged in their reading journal on a daily basis. Maths and English homework will be set alternately on Fridays. A half-termly topic challenge will also be uploaded on to Seesaw at the start of the term. This is an open-ended challenge and can be completed in any creative way that your child would like. Please do not hesitate to come and talk to us if you would like any further information regarding the Year 1 curriculum.

Key Dates:

**School opens:** Tuesday 9th January

**History Day:** Wednesday 17th January

**World Religion Day:** Monday 22nd January

**Children's Mental Health Week:** Monday 5th February  
**National Story Telling Week:** W/B: Monday 12th February  
**Safer Internet Day:** Monday 13th February