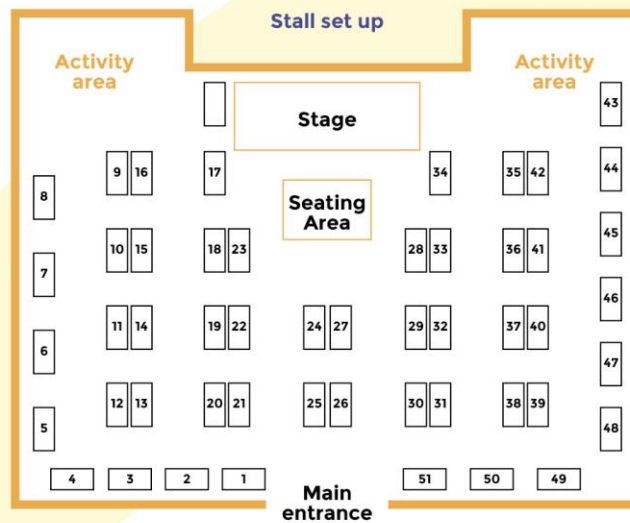


Stallholder information

- Child and adolescent mental health service (CAMHS)
- Child and adolescent mental health service - learning disabilities (CAMHS LD)
- Community paediatricians
- Diana service
- Annual health check and Preparing for adulthood (health)
- Care Navigation Service
- Healthy Together
- Menphys
- Health Watch Leicester
- Occupational therapy and physiotherapy
- Nutrition and dietetics
- Specialist autism team
- Vista children and young people
- Irwin Mitchell
- Mosaic 1898
- Department for Work and Pensions (DWP)
- Soft Touch Arts
- Leicester Mammals
- Barnardo's Leicester, Leicestershire and Rutland key working service
- New Leaf Triangle
- SENDIASS
- Pedestrian
- Leicestershire Down's syndrome group
- Partnership for Inclusion of Neurodiversity in Schools (PINS)
- Leicester City Parent Carer Forum



- Local Offer, Preparing for adulthood
- Independent health care plans (IHCP)
- Disabled children's service
- Preparing for adulthood team, adult social care
- Supported living team
- Family Hubs
- Sense College
- Sense Hub Loughborough
- Vision support team, Hearing support team
- Early years support team
- Speech and language therapy
- Early Language Support for Every Child (ELSEC)
- Learning communication interaction team
- Quality inclusion team
- Special education service
- Gateway Sixth Form College
- Leicester College
- DFN Project Search
- Homefield College
- Nether Hall School
- Connexions, Leicester
- Ellesmere College
- City psychology service
- Social emotional mental health team
- Mental health support team
- Information table

Local Offer Live shares information about support services available in Leicester to help children and young people with special educational needs and disability, and their families.

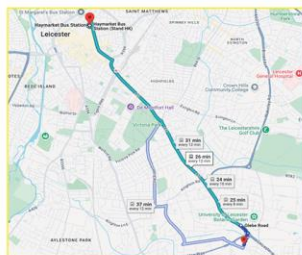
Schedule of events

9.30am	- Event opens
10.30am	- Netherhall Samba! Soloist Hayden Rosorio
11am	- The Starz - Ashfield Academy
12pm	- Big Mouth Forum
1pm	- Celebration of Success awards ceremony
4 pm	- Event closes

All day activities

Arts and crafts, by Soft Touch Arts
Book Bus and storytelling, from library services
Messy play, by early years support team

How to get there



The following bus services run nearby: 31A, X7, and X3.

For local travel information visit: choosehowyoumove.co.uk

With special thanks to our sponsors for the awards ceremony:

Adult social care
City psychology service
Latin Flava UK
Leicester City Parent Carer Forum
Leicester Racecourse
Send integrated service 0-25 years
Shila and Hasmukh Parmar
RnR Retreat and disabled children's service.

Local Offer Live 2025

Special educational needs and disability information day
Thursday, 6th March 2025

Free event for all

Stalls, performances and awards ceremony

The Kube
Leicester Racecourse,
Leicester, LE2 4AL



FREE parking

Drop in anytime
9.30am - 4pm

For further information contact
07849 553156



[Families.leicester.gov.uk/send-local-offer](https://families.leicester.gov.uk/send-local-offer)
localoffer@leicester.gov.uk

