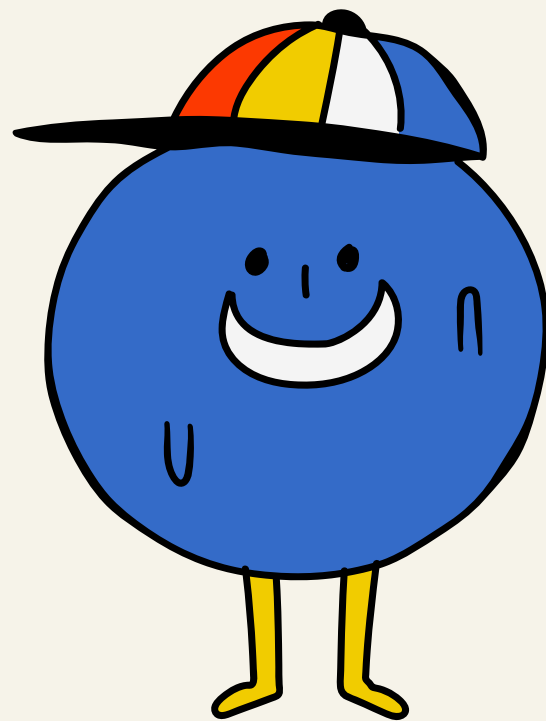
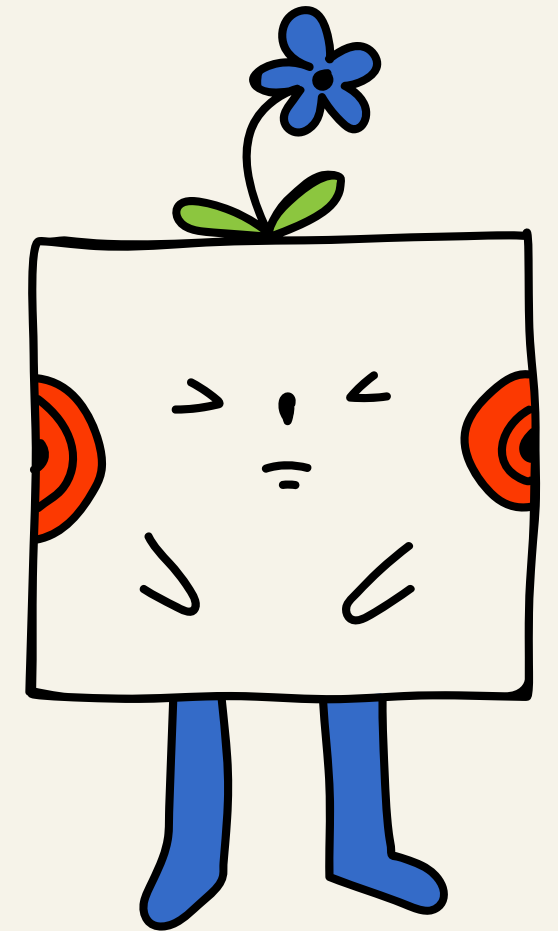
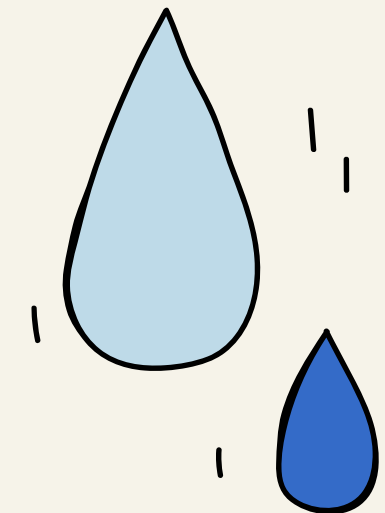


# The Mental Health Support Team in Schools

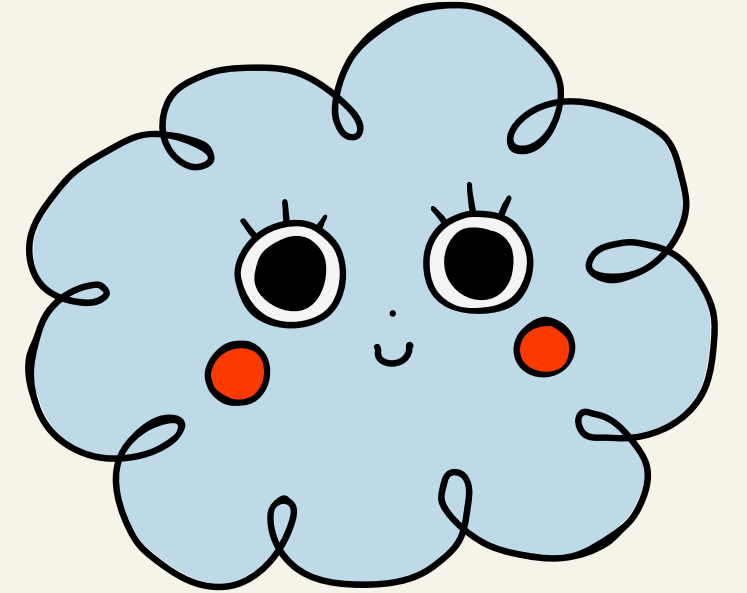


Competition!!



# WHO WE ARE AND WHAT WE DO...

## MHST in Schools



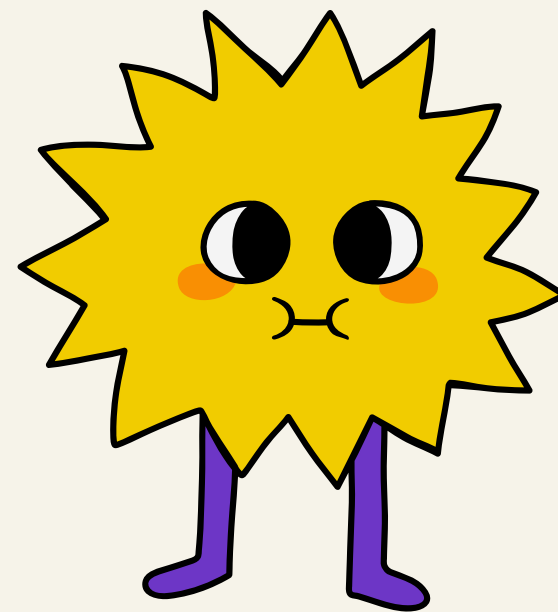
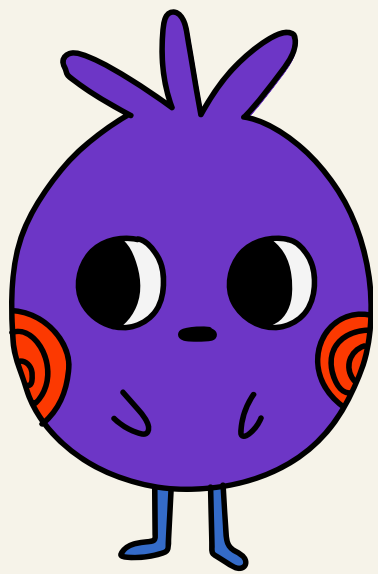
MHST stands for Mental Health Support Team.

We work for the NHS, in your school! (and other schools over Leicester and Leicestershire)

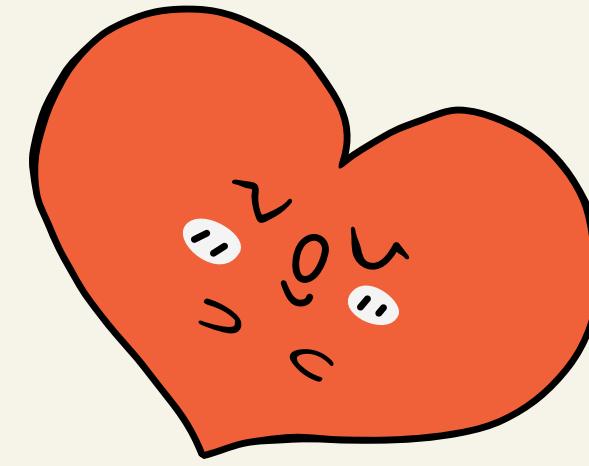
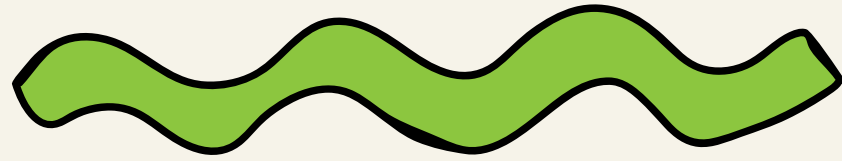
We support children and young people with their mental health. We all have mental health, sometimes it's good, and sometimes not so good.

It is normal to feel sad, scared or worried, we all do sometimes, however if this is happening so much that it is impacting our every day lives, then we may need a little bit of support to help us to know how to cope and to feel better again.

This is where we come in!

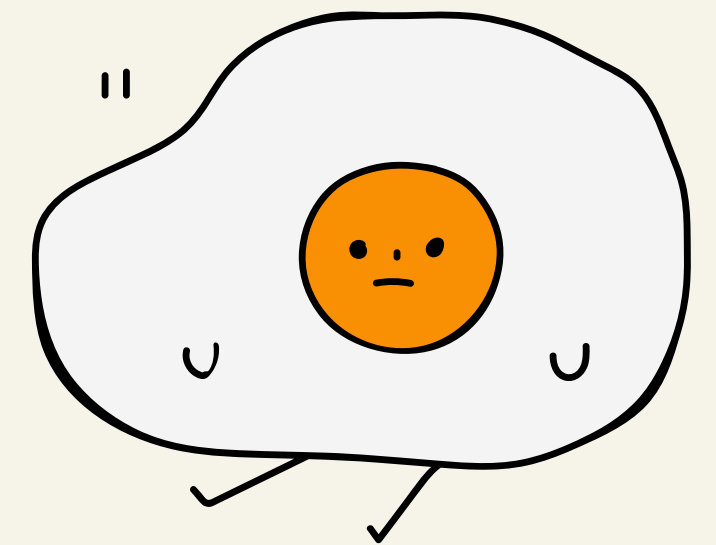


# Logo Design Competition!

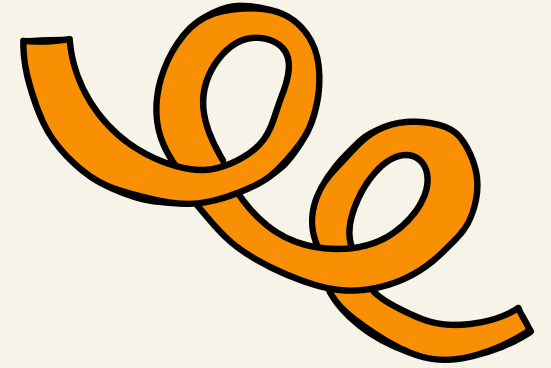
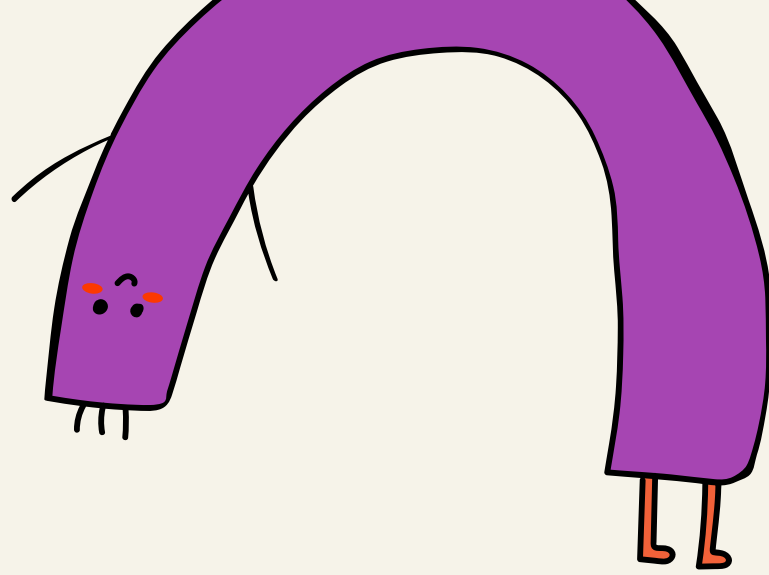


We are having a competition across all the schools we work with- we need your help to design a brand new logo for MHST. You must enter by **Tuesday 8th July (please hand in your entries to your school)** and we will choose a logo over the summer holidays. The winner will receive a prize and their design will be MHST's new logo!

GOOD LUCK!

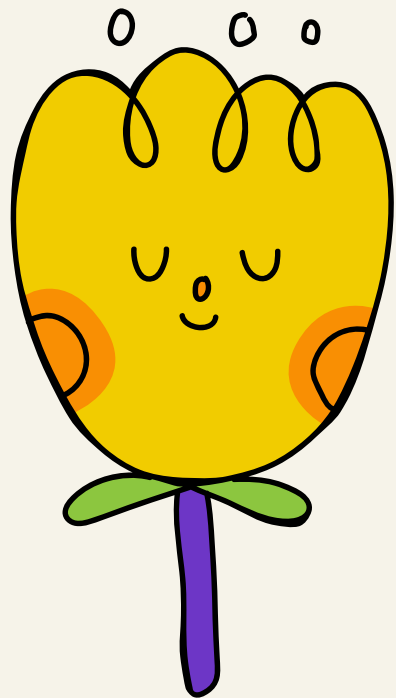


# DESIGN BRIEF

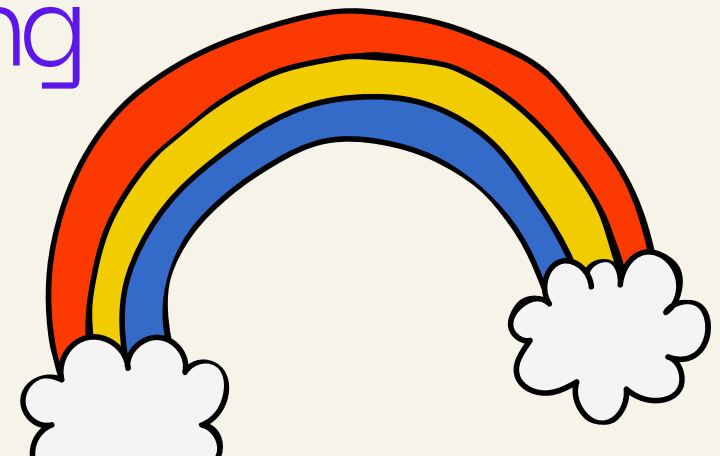


Some things to consider when designing your logo...

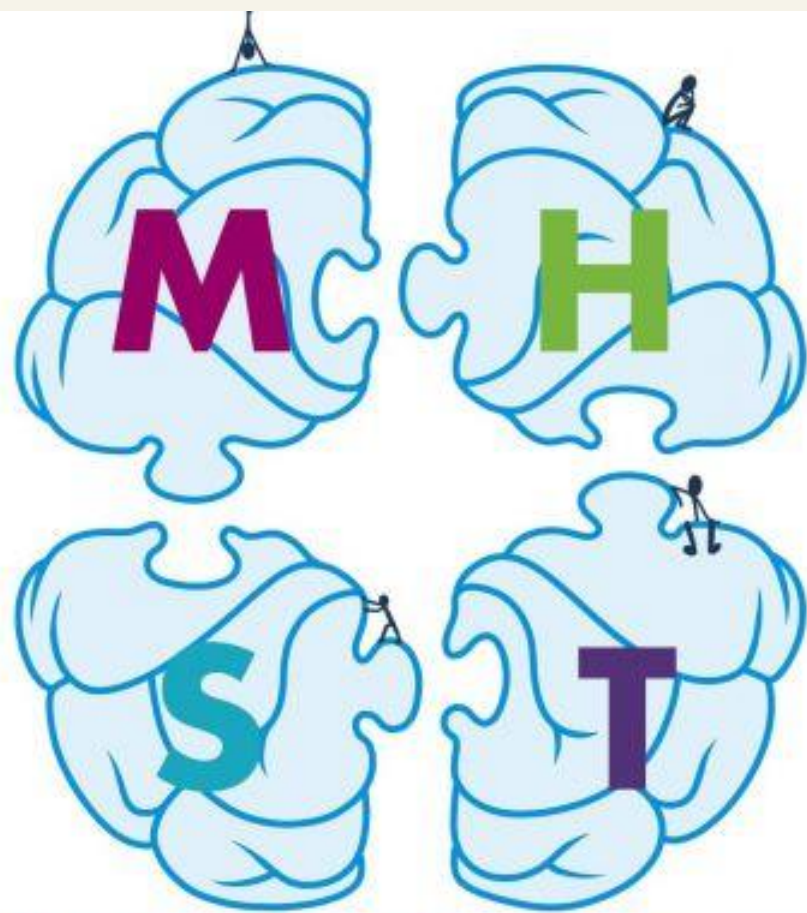
- We are a Mental Health Service in Schools
- We are from the NHS
- We cover primary and secondary schools, age range 5-18 years



The next slide shows some examples of logos being used for other MHST's across the country...







Mental Health Support Team  
ELCAS | East Lancashire Child and Adolescent Services



Herts & West Essex  
Mental Health Support Teams



Mental Health Support Team



# Mental Health Support

for children & young people



Mental  
Health  
Support  
Team in  
Schools